



# Quick Start Guide



## MeticaFM 7 Hardware Upgrade



Upgrade the hardware in your MeticaFM 7 to **unlock additional software features** such as: pattern generator, false color, range error, histogram, and audio columns.

**i** For upgrades, the unit must be sent back to your local F&V Service Center where the upgrade will be installed by one of our technicians. Please allow 2-3 days for installation.



F&V Photographic Industry B.V.  
Steenovenweg 5, 5708HN Helmond, Netherlands  
TM & © F&V All rights reserved.

For more information visit: [fvlight.com](http://fvlight.com)



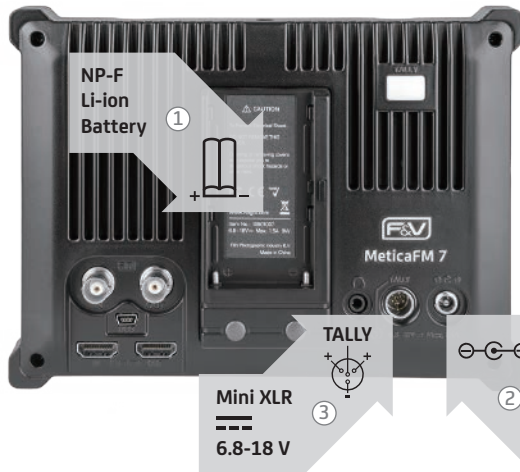
## MeticaFM 7 Field Monitor

- 1 Getting Started
- 2 Functions
- 3 Software Upgrade

### What's in the box?



## 1 Getting Started



### 1 Power

Three power options

- NP-F li-ion battery (1)
- DC 2.5Φ 6.8-18V Max.1.5A (2)
- Mini XLR 6.8-18V (3)

### 2 Signal

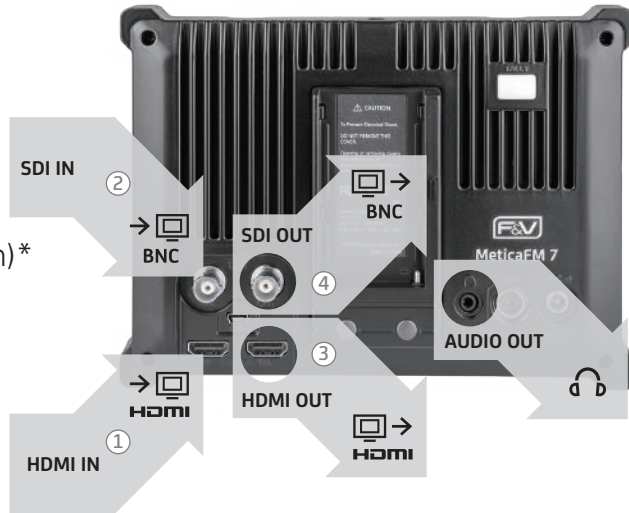
Input

- HDMI (1)
- SDI (2)

Output (Loop through)\*

- HDMI (3)
- SDI (4)

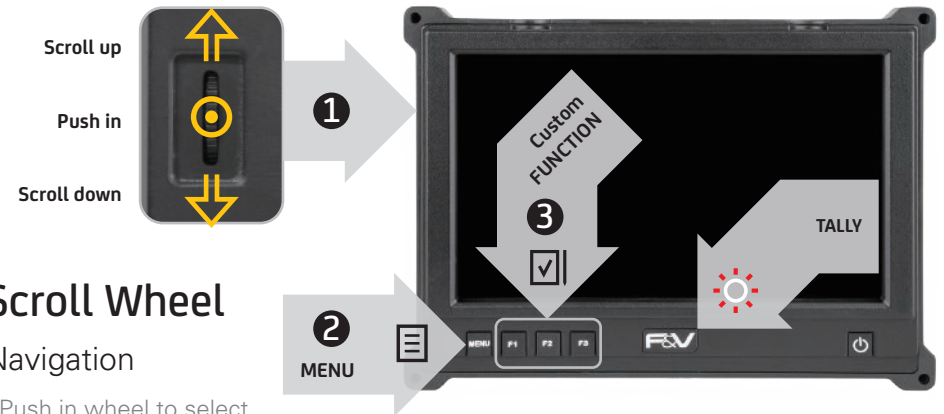
\*The signal can loop through, but it cannot cross-convert



### 3 Let's do this!

Turn the monitor ON

## 2 Functions



### 1 Scroll Wheel

Navigation

- Push in wheel to select
- Scroll to navigate menu or adjust values

Functions (When no menu is showing)

- Scroll up/down to quickly to adjust volume
- Push in to initiate shortcut to "Picture" settings. Continue to push in to cycle through all available "Picture" settings, such as brightness, contrast, etc. When a setting is displayed, scroll to adjust values

### 2 Menu / Back Button

When navigating the menu

- Click the menu button to "go back" in the menu navigation

### 2 Custom function button

Easily assign shortcuts to the function buttons in the "Advanced" menu screen

## 3 Software Upgrade

### 1 Download

Download the new firmware files to a USB stick (16GB or less)

### 2 Upgrade

- Turn the monitor off, and plug in USB
- Turn on monitor. The front buttons will begin to flash. Wait until buttons stop flashing and remain illuminated
- Turn OFF monitor, remove USB, and turn ON monitor

